



SERIOUS SERVICE®
Professional Machinery Health Care
(Fan Doctor®)



VIBES Corp®



Vibration **I**ndustrial **B**alancing & **E**quipment **S**ervices, Corporation
720 - 999 W. Broadway, Vancouver, BC V5Z 1K5

www.vibescorp.ca email: info@vibescorp.ca

Phone: 604 - 619 - 9381 (24/7)

VIBES Corp is BC agent for Cooling Tower Maintenance (CTM)

**Contact us to purchase
the products in this catalog:**

tel: 604 619 9381

email: info@vibescorp.ca



Appruv™



Avetta®



Vendor Compliant for Property Owners, Management Firms of Commercial Buildings, Hospitals, Industrial, Marine Sites & Infra-Structure Facilities



SERIOUS SERVICE®
Professional Machinery Health Care
(Fan Doctor®)



VIBES Corp®



Vibration **I**ndustrial **B**alancing & **E**quipment **S**ervices, Corporation

720 - 999 W. Broadway, Vancouver, BC V5Z 1K5

www.vibescorp.ca email: info@vibescorp.ca

Phone: 604 - 619 - 9381 (24/7)

CTM HAS THE LARGEST SELECTION OF REPLACEMENT PARTS IN THE COUNTRY

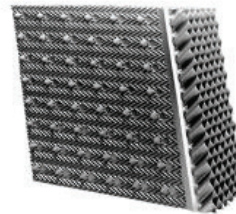
At Cooling Tower Maintenance, we carry parts for all types of towers including BAC, Evapco and Marley towers. Many parts have the option of O.E.M or equivalent to or exceed the Original Equipment Manufacturer (O.E.M.) standards. The added value is they have been selected to improve and enhance the longevity of the cooling tower.



Water Distribution Parts



New Mechanical
Equipment



Fill & Eliminators



Fans – Blades & Hubs



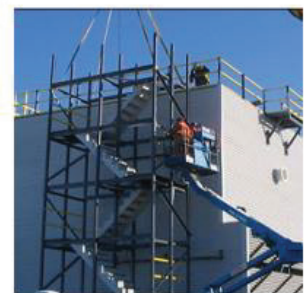
Gearboxes & Motors



Fire Retardant Fiberglass



Electrical Accessories



Ladders, Platforms,
Handrails, & Doors



ApprUV™



Avetta®



Vendor Compliant for Property Owners, Management Firms of Commercial Buildings, Hospitals, Industrial, Marine Sites & Infra-Structure Facilities



SERIOUS SERVICE®
Professional Machinery Health Care
(Fan Doctor®)



VIBES Corp®



Vibration **I**ndustrial **B**alancing & **E**quipment **S**ervices, Corporation
720 - 999 W. Broadway, Vancouver, BC V5Z 1K5

www.vibescorp.ca email: info@vibescorp.ca

Phone: 604 - 619 - 9381 (24/7)

Water Distribution Parts

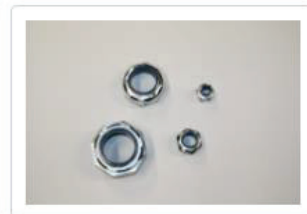
We carry a wide variety of Nozzles, Valves, and Distribution Assembly parts for any tower.



New Mechanical Equipment

We have Mechanical Equipment to meet all of your needs.

- Bearings are in stock at ALL times for all makes & models of towers & air handling units. From Split sleeve & solid sleeve bearings to pillow block & flange mounted bearings.
- We have a wide variety of drive shafts including drive shafts hollow tube & solid fan shafts in mild steel or stainless steel for cooling towers, closed circuit coolers & air handling units.
- Float Valves, Floats complete with aluminum bar and stainless steel adapter for convenient lateral and vertical adjustment.
- Whether you are looking for Scrutities, Screens, Springs, or any other Mechanical Accessory we can help you.



Vendor Compliant for Property Owners, Management Firms of Commercial Buildings, Hospitals, Industrial, Marine Sites & Infra-Structure Facilities



SERIOUS SERVICE®
Professional Machinery Health Care
(Fan Doctor®)



VIBES Corp®



Vibration **I**ndustrial **B**alancing & **E**quipment **S**ervices, Corporation

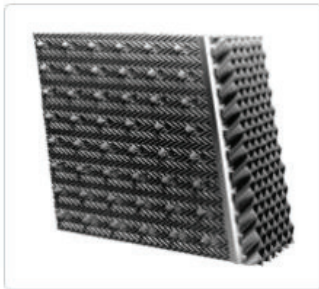
720 - 999 W. Broadway, Vancouver, BC V5Z 1K5

www.vibescorp.ca email: info@vibescorp.ca

Phone: 604 - 619 - 9381 (24/7)

Fill & Eliminators

We offer Eliminators and Fill to meet any of your tower requirements for both Counter flow or Cross flow towers.



Fan Blades & Hubs

We supply all fan blades, Heavy duty fan wheels, and Cylinder Fans for all makes & models of cooling towers, closed circuit coolers & air handling units. We also have a complete range of fan clamps & balancing clips for all fan wheels & balancing requirements.



Vendor Compliant for Property Owners, Management Firms of Commercial Buildings, Hospitals, Industrial, Marine Sites & Infra-Structure Facilities



SERIOUS SERVICE®
Professional Machinery Health Care
(Fan Doctor®)



VIBES Corp®



Vibration **I**ndustrial **B**alancing & **E**quipment **S**ervices, Corporation
720 - 999 W. Broadway, Vancouver, BC V5Z 1K5

www.vibescorp.ca email: info@vibescorp.ca

Phone: 604 - 619 - 9381 (24/7)

Gear Boxes & Motors

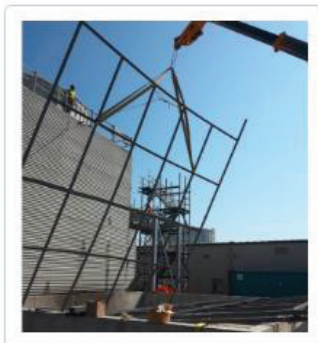
- New & rebuilt motors and reducers with complete warranties, for all makes of cooling towers. Gear Reducer parts, lubrication and accessories available. A complete range of half couplings, neoprene bushings, and Boston couplings.

- Cooling tower motors operate in harsh conditions. Windings must be triple dipped & baked. Customized drain holes & seals required on motors in discharge air streams. All motors have full warranties. We have a variety of Gearboxes and motors to fit your tower



Fire Retardant

FIBERGLASS CASING & LOUVERS: Fire retardant fiberglass casing, corner rolls, access doors & louvers (8oz, 12oz, 16oz & 24oz) all colors available. We offer Panels, Casings, & Louvers for any Tower.



ApprUV™



Avetta®



Vendor Compliant for Property Owners, Management Firms of Commercial Buildings, Hospitals, Industrial, Marine Sites & Infra-Structure Facilities



SERIOUS SERVICE®
Professional Machinery Health Care
(Fan Doctor®)



VIBES Corp®



Vibration **I**ndustrial **B**alancing & **E**quipment **S**ervices, Corporation

720 - 999 W. Broadway, Vancouver, BC V5Z 1K5

www.vibescorp.ca email: info@vibescorp.ca

Phone: 604 - 619 - 9381 (24/7)

Electrical Accessories

We offer all electrical accessories for any tower, contact us find out which part best suits your needs.



tel: 604 619 9381

email: info@vibescorp.ca



ApprUV™



Avetta®



Vendor Compliant for Property Owners, Management Firms of Commercial Buildings, Hospitals, Industrial, Marine Sites & Infra-Structure Facilities



SERIOUS SERVICE®
Professional Machinery Health Care
(Fan Doctor®)



VIBES Corp®



Vibration **I**ndustrial **B**alancing & **E**quipment **S**ervices, Corporation
720 - 999 W. Broadway, Vancouver, BC V5Z 1K5

www.vibescorp.ca email: info@vibescorp.ca

Phone: 604 - 619 - 9381 (24/7)

Safety Ladders, Platforms, Handrails & Doors

- Safety regulations require access ladders, safety cages, perimeter handrails & walkways as per Ontario Ministry of Labour Bill 208 standards.
- CTM Safety Access Doors are larger than present 17" or 22" circular steel doors, are non-corrosive, optimally sized to suit each cooling tower and easily retro-fitted into existing large and small tower installations. It promotes full and safe access to the cold water basin for cleaning and maintenance – often without the need to actually enter the tower!
- We carry all certified access ladders, safety cages, perimeter handrails, walkways, and access doors to fit your tower. All are custom built to fit your cooling tower needs.



tel: 604 619 9381

email: info@vibescorp.ca



Appruv™



Avetta®



Vendor Compliant for Property Owners, Management Firms of Commercial Buildings, Hospitals, Industrial, Marine Sites & Infra-Structure Facilities